



# about **BonC Innovators**

**BonC** Innovators



## Company Profile

■ Company Name	BonC Innovator Co., Ltd
■ Date of Establishment	March 28, 2006
■ Telephone	+82 70-4763-4730
■ FAX	+82 70-7176-0181
■ E-mail	rnd@bonc.co.kr
■ Homepage	www.bonc.co.kr
■ Head office&Development center	909, 685, Bitgaram-ro, Naju-si, Jeollanam-do, Korea (58217)
■ Factory	108, Home Robot Support Center, GwangjuTechnopark, 333, Chemdangwagi-ro, Buk-gu, Gwangju, Korea (61008)

## Business Areas

### SI-NI

#### Differentiated System&Network Integration

- Specialized field SI(public sector)
- System analysis, design and development
- Package S/W based system development
- System management, operation and maintenance
- H/W, S/W integrated construction and management

### ITO

#### Effective IT Outsourcing

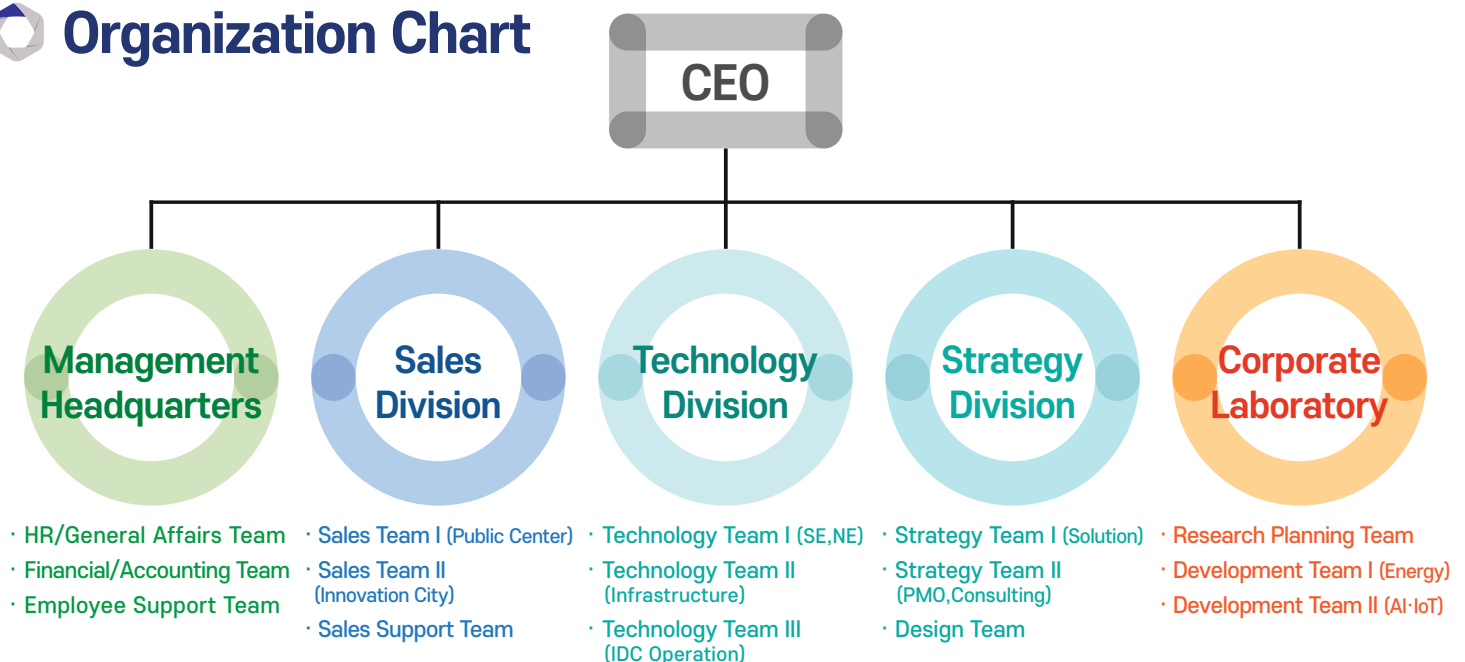
- IT outsourcing consulting
- Network infrastructure operation service
- Application service
- Disaster recovery service
- Security management service

### Biz Development

#### Leading e-Biz Development

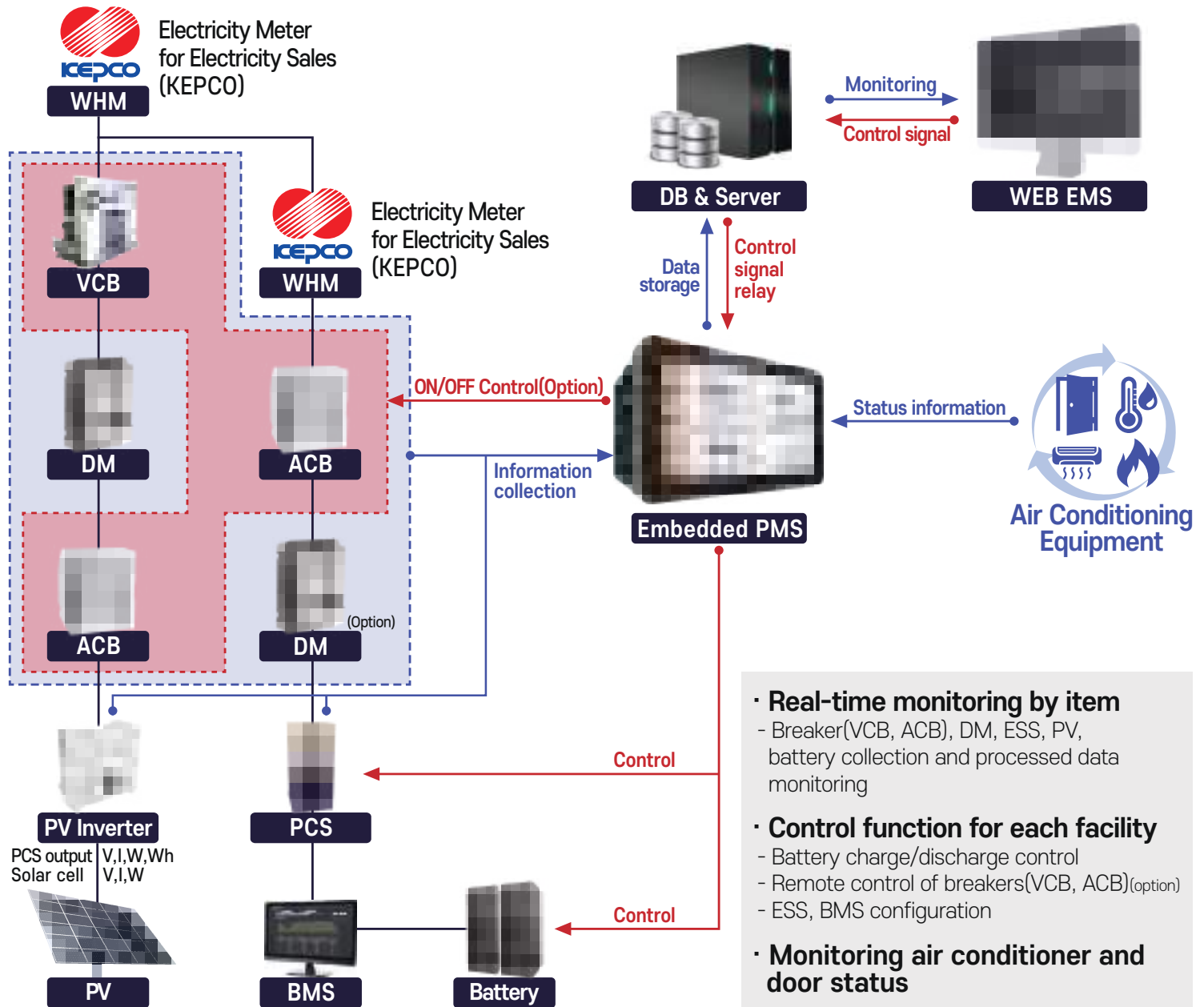
- Big data solution
- Open source-based solution development
- Smart device related development
- Mobile tablet PC based solution development

## Organization Chart





# Configuration Diagram



## Applications

### EMS applied to new and renewable energy power plant

Real-time element facility monitoring and error notification



Schedule-based power generating battery charge/discharge



Power charge control to power-generating quantity



REC and SMP revenue management

### EMS applied to buildings, shopping malls, factories

Real-time element facility monitoring and error notification



Schedule based power generation electric charge/discharge



Saved power and efficiency analysis



Power control based on demand response



## PCS/battery control monitoring

Battery charge/discharge  
and state monitoring

PCS charge/discharge state monitoring

PCS charge/discharge schedule  
and control

Emergency operation mode

## Communication (interlocking) and security management

Communication and protocol  
analysis/development

Communication and complementary  
PMS connection technology

## Data collection/storage /management

BMS, PCS state data management

ESS operational effect analysis

Charge/discharge schedule  
/control and history data

Error and configuration information

Notification Service EVENT like SMS, etc.

## Power Facility Monitoring

Real-time monitoring of load and GRID

Relay, Air Conditioning Equipment

Monitoring

Present State of Error and Analysis



### Real-time facility viewing

- ESS operation status
- Battery charging/discharging status
- Solar power generation status
- Electricity sales status



### PCS status inquiry

- PCS status
- Grid status
- Real time error code and error history inquiry
- Operation history inquiry



### Battery status and error inquiry

- Battery status inquiry
- Battery protection system inquiry



### PMS environment configuration

- System configuration
- Battery configuration
- PCS Control configuration
- PCS SET configuration





Power Management System "ON" of BonC Innovators Co., Ltd. provides with different functions required to manage and operate ESS associated to battery and new renewable energy such as photovoltaics, wind power, etc. Based on much research and experience, "ON" is compatible with PCS, batteries and instruments for measurement from different manufacturers. Power control is possible under different ESS environment. In addition, it supports demand response associated with DR protocol and peak control through schedule control. It can be utilized under various ESS application environments.



### Main Page Details

Failure history by facility / Real time sales / PCS status / BSC/BMS status



### Statistics Page Details

Monthly data history inquiry / Daily detailed data inquiry



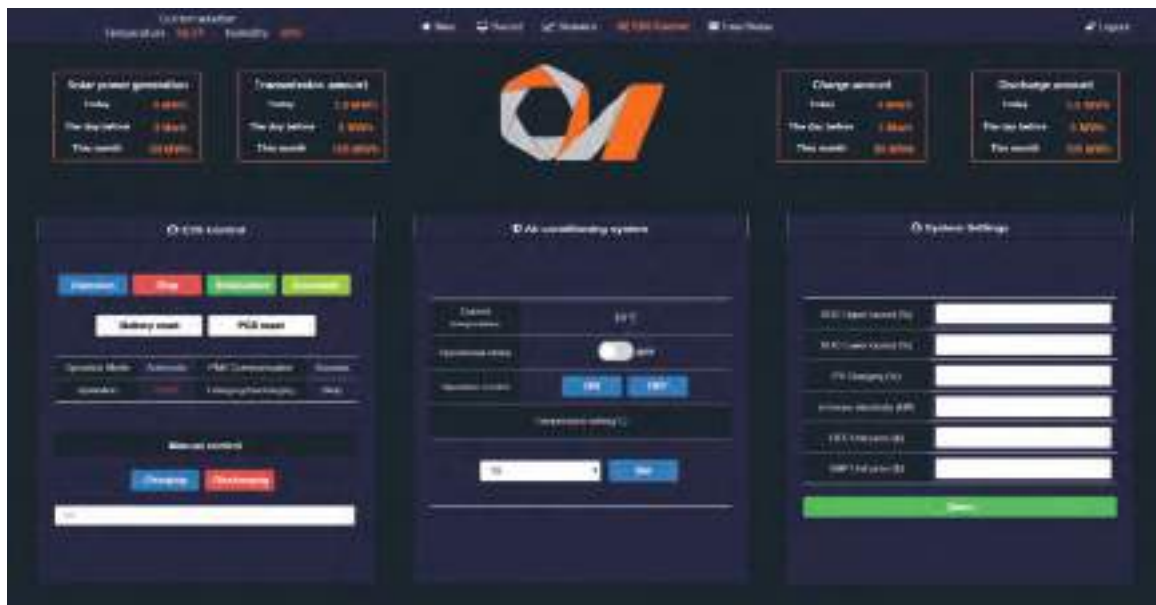
## Remote EMS service support

- Users can check present state of operation anytime and anywhere by accessing remote PC on server and MOBILE.
- SMS notification and system notification service issue for ESS failure.



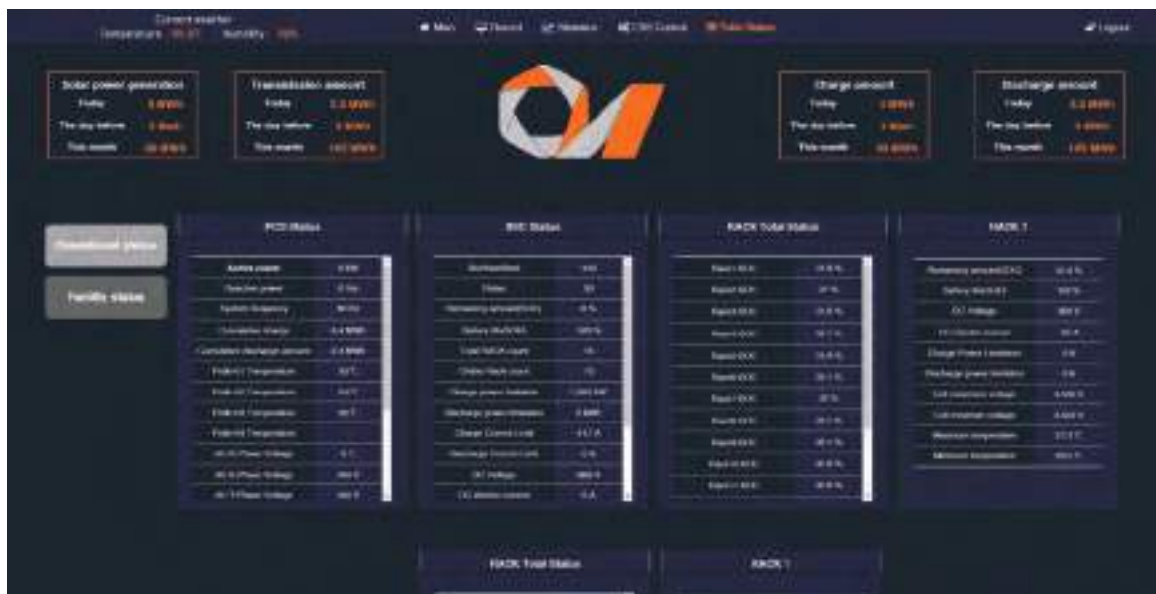
## Optimization of LOCAL EMS/PMS

- Set trial run time for each ESS operation scenario and operate ESS to sense error in current ESS state.
- Calculate accurate profitability considering actual PCS output efficiency and ESS conversion efficiency.



### ESS Control Page Details

ESS operation status check / ESS operation status control  
/ air conditioning facility configuration / system configuration



### Total Status Page Details

Overall status / PCS status / BSC status / RACK status / ESS-Meter status / PV-Meter status





**Main Page Details**



All services provided by ON EMS such as real time operation monitoring, statistics, facility information, events and facility control are supported by mobile platform of Android / IOS.

This provides an optimal layout in response to the display of the mobile device.



**Record Page Details**



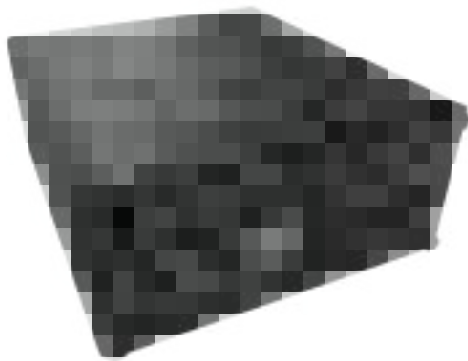
**ESS Control Page Details**



**Statistics Page Details**

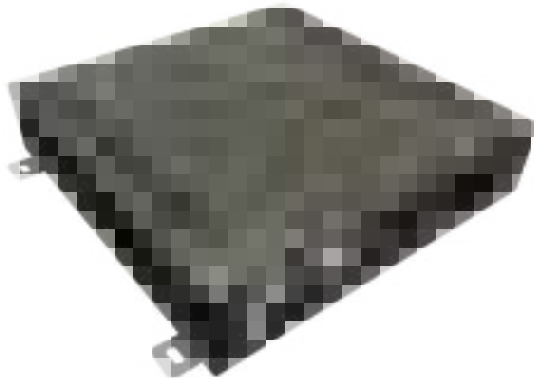


## Product Specification



**ONPMS100**

CPU	ARM Coretex-A9 1.0GHz
HDD	eMMC 32GB
RAM	DDR3 2GB
Display	HDMI × 1
USB	2.0 × 2
Serial	COM port × 2
Network	RJ-45 LAN × 1
Power	Input DC 5V
Case	STEEL(110mm × 50mm × 124mm)



**ONPMS300**

CPU	Celeron 3955 2.0GHz dual core
HDD	SSD 2.5" 120G
RAM	DDR3 4GB
Display	HDMI × 1, D-SUB × 1
USB	2.0 × 2
Serial	COM port × 2
Network	RJ-45 LAN × 1
Power	12V 5A DC
Case	STEEL (200mm × 200mm × 45mm)



**ONPMS500**

CPU	Xeon Processor 3.5GHz
HDD	500GB
RAM	DDR4 8GB
Display	D-SUB × 1
USB	3.0 × 5
Network	RJ-45 LAN × 1
Power	460W
Case	STEEL, Case Nut Type Server Rack

All specifications can be negotiated.